







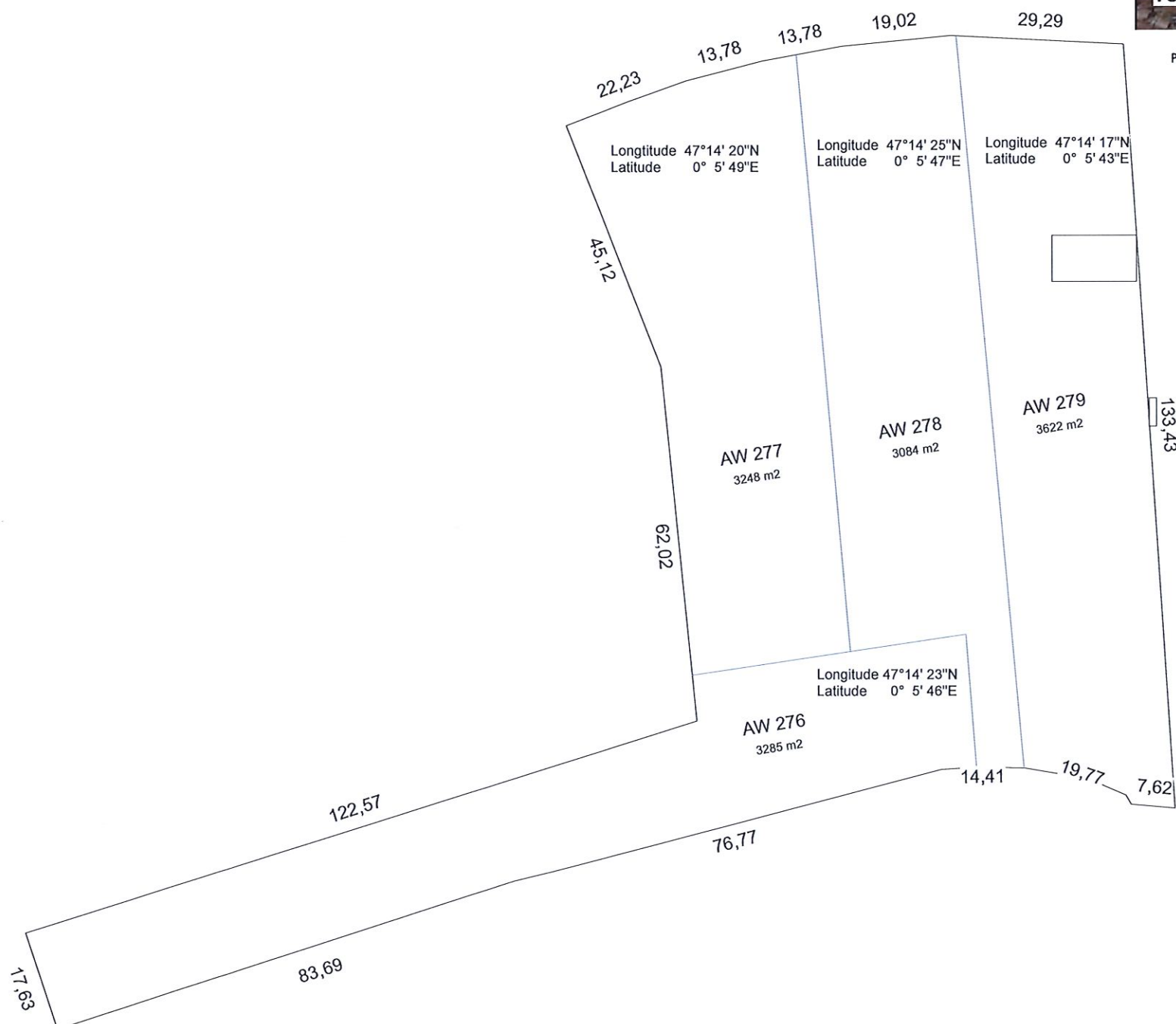
VUE 1



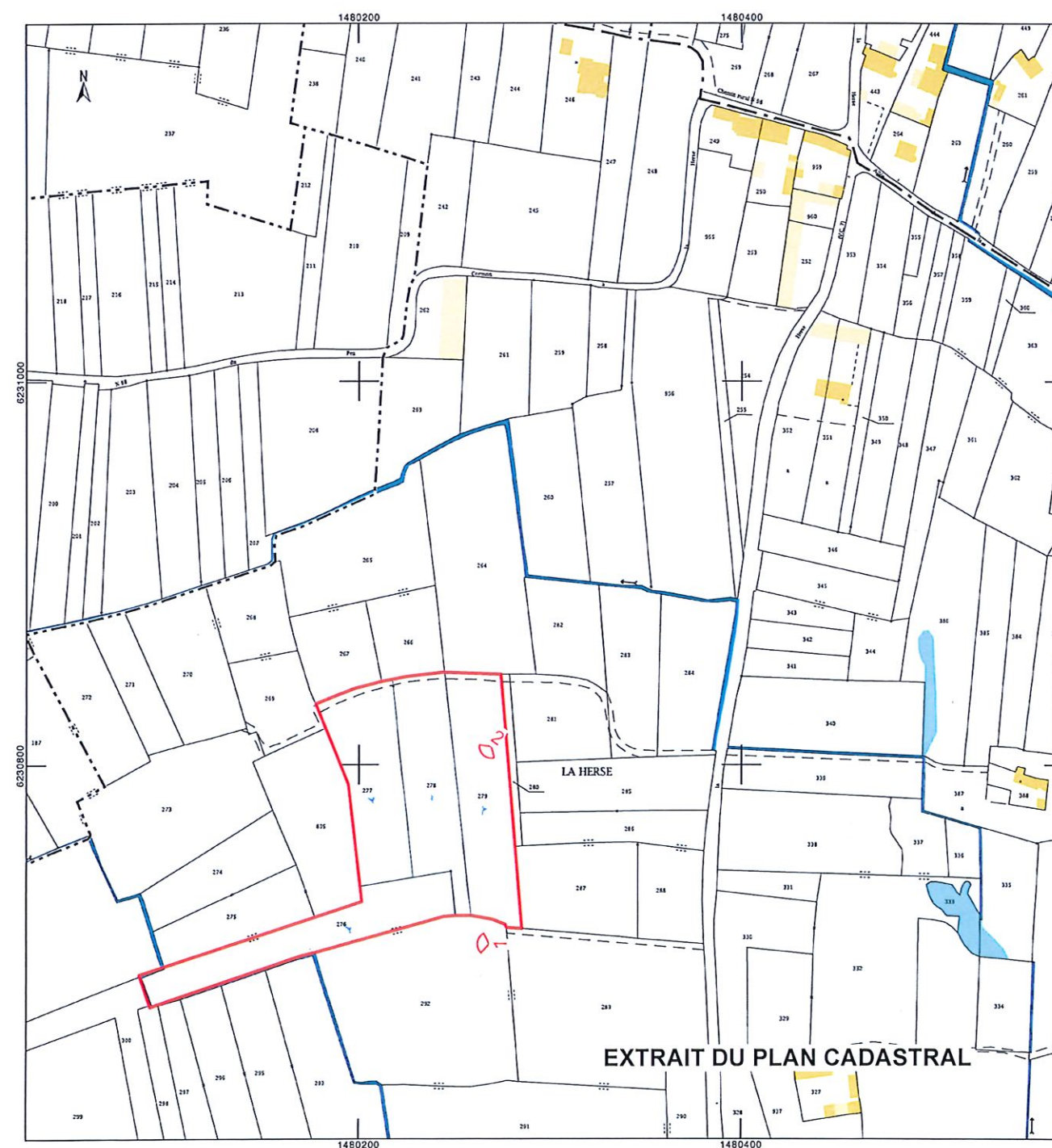
VUE 2

PHOTO RÉALISÉE LE 3 SEPTEMBRE 2020

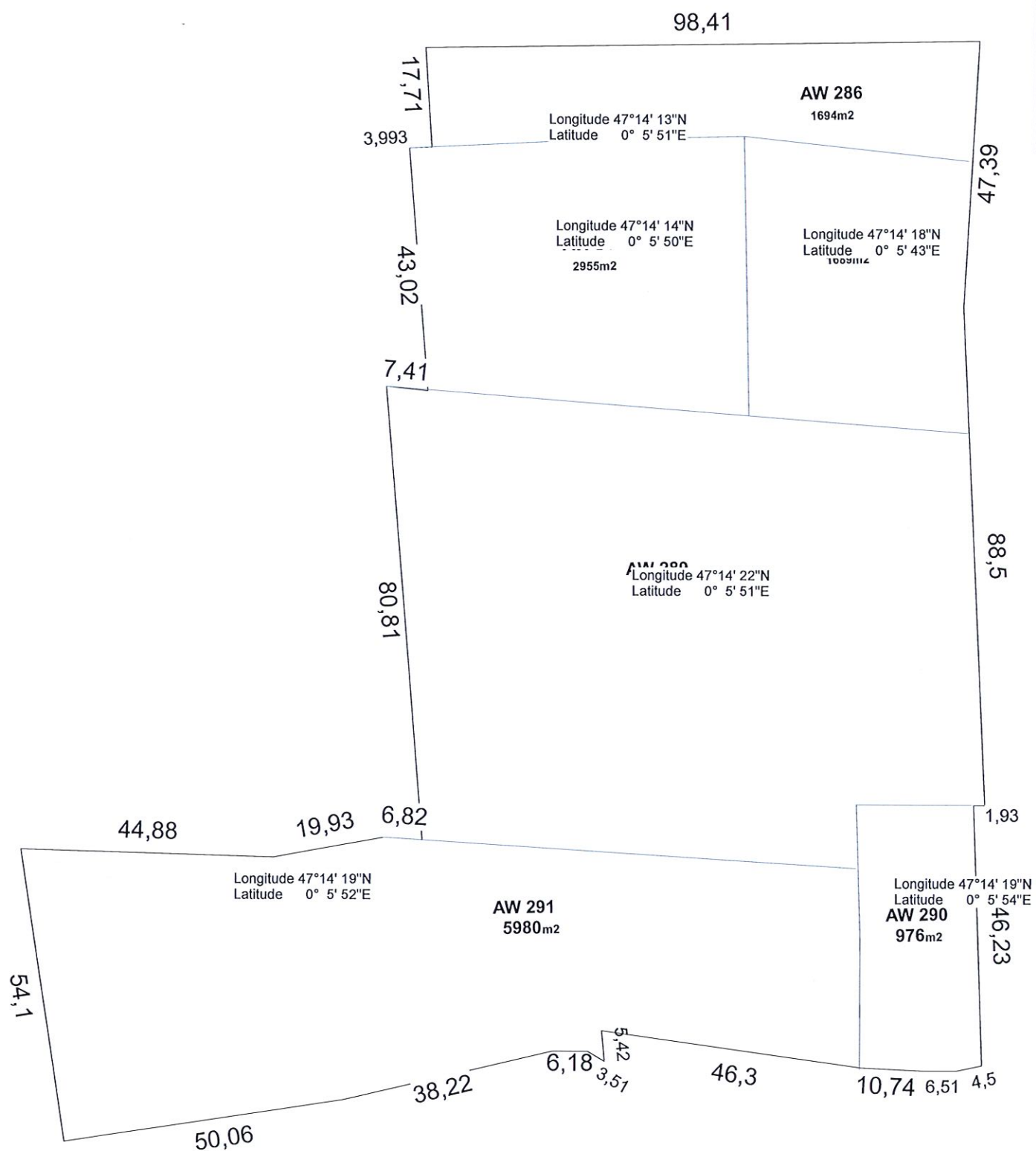
PHOTO RÉALISÉE LE 3 SEPTEMBRE 2020



ANNEXE 2 ZONE IMPLANTATION TERRAIN 1







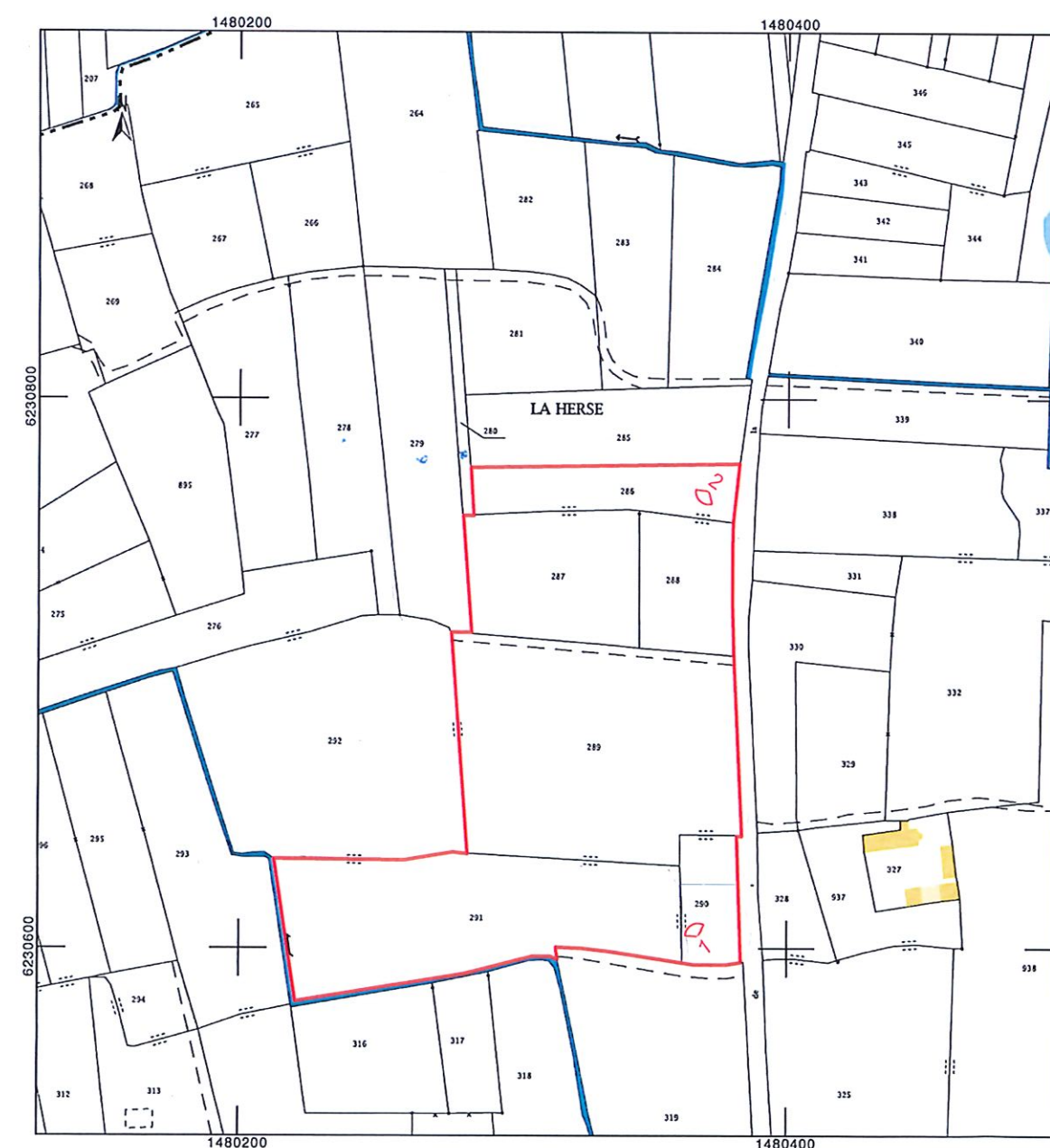
ANNEXE 2 ZONE IMPLANTATION TERRAIN 3



PHOTO RÉALISÉE LE 3 SEPTEMBRE 2020



PHOTO RÉALISÉE LE 3 SEPTEMBRE 2020



EXTRAIT DU PLAN CADASTRAL

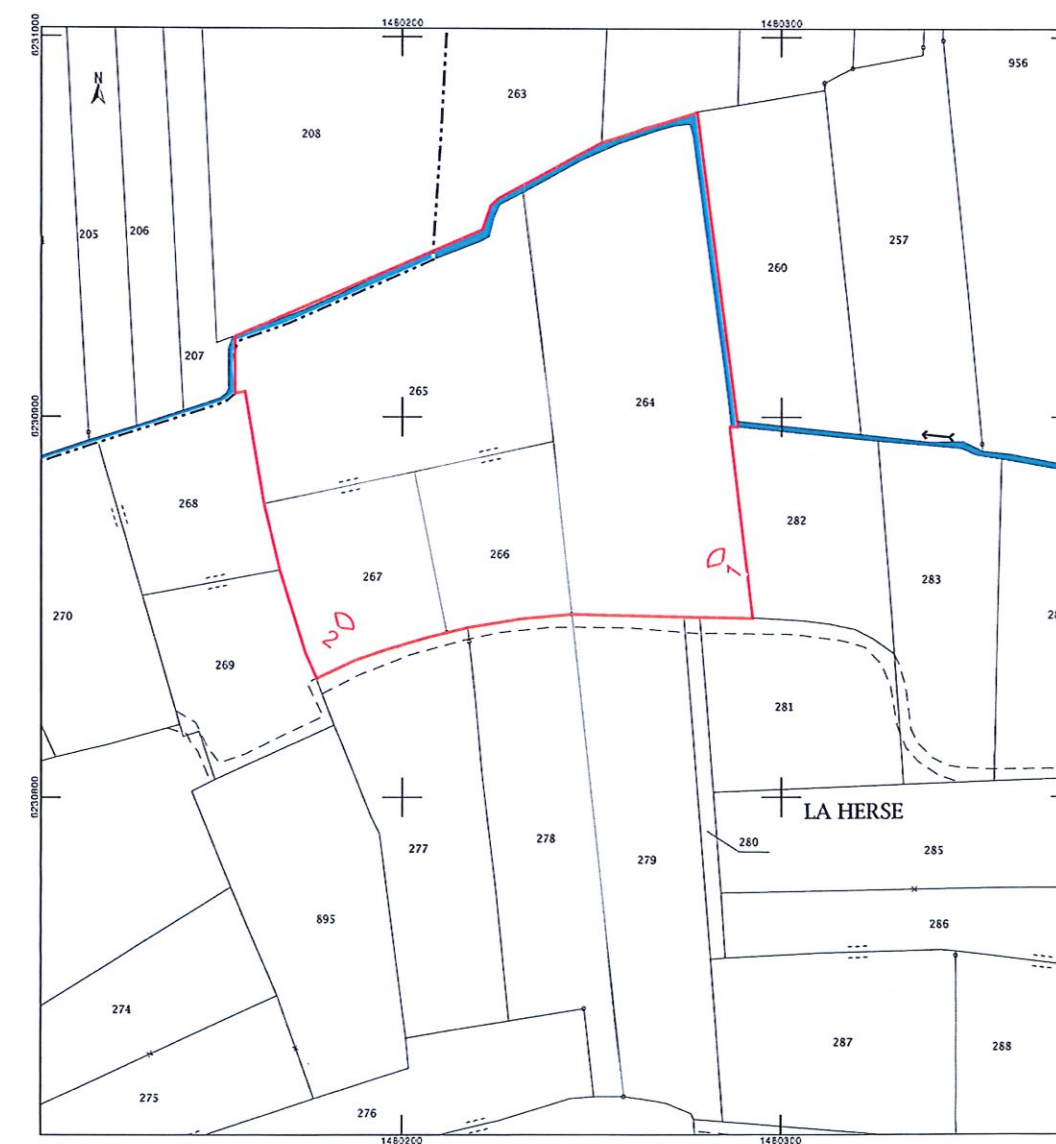
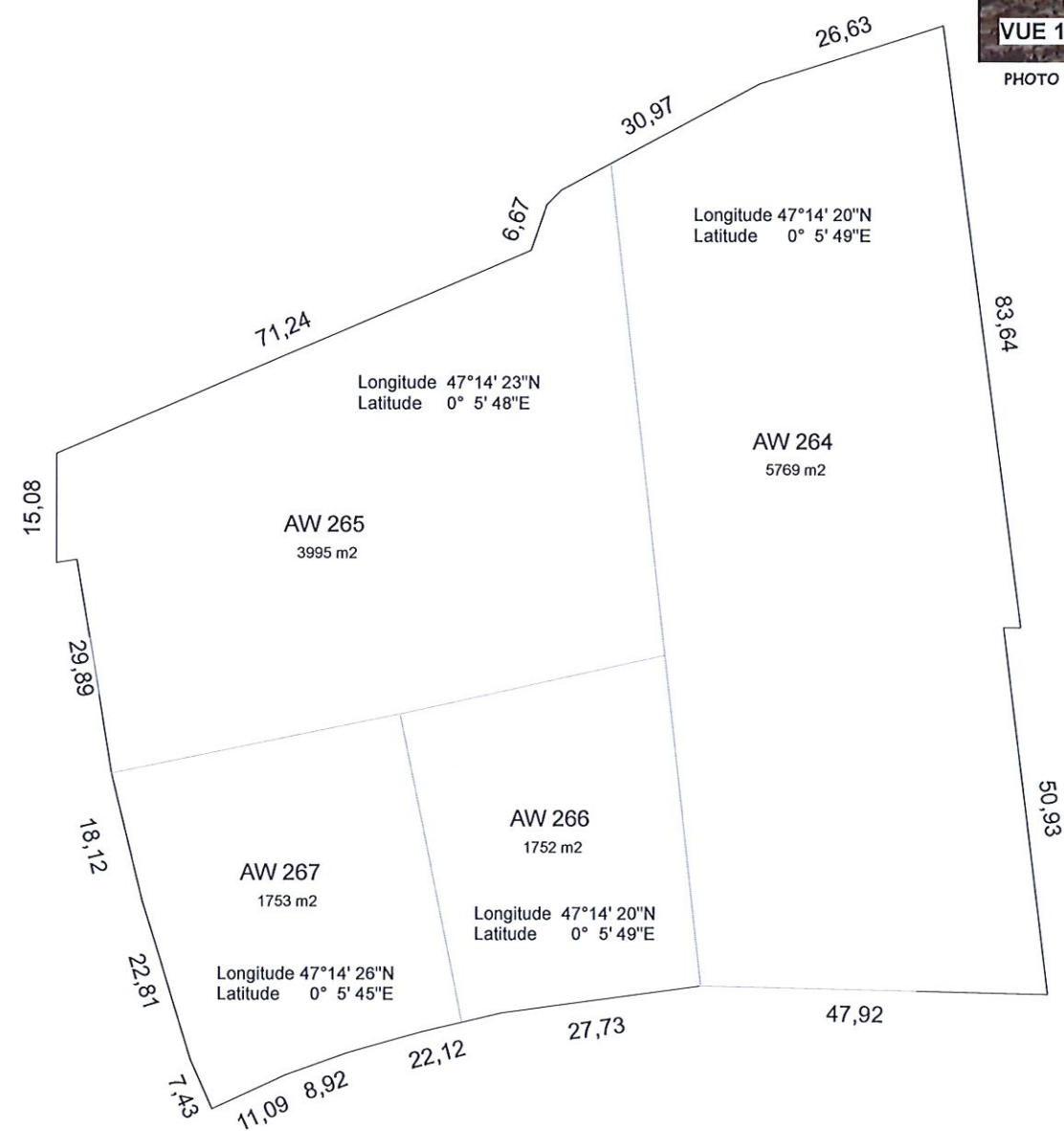




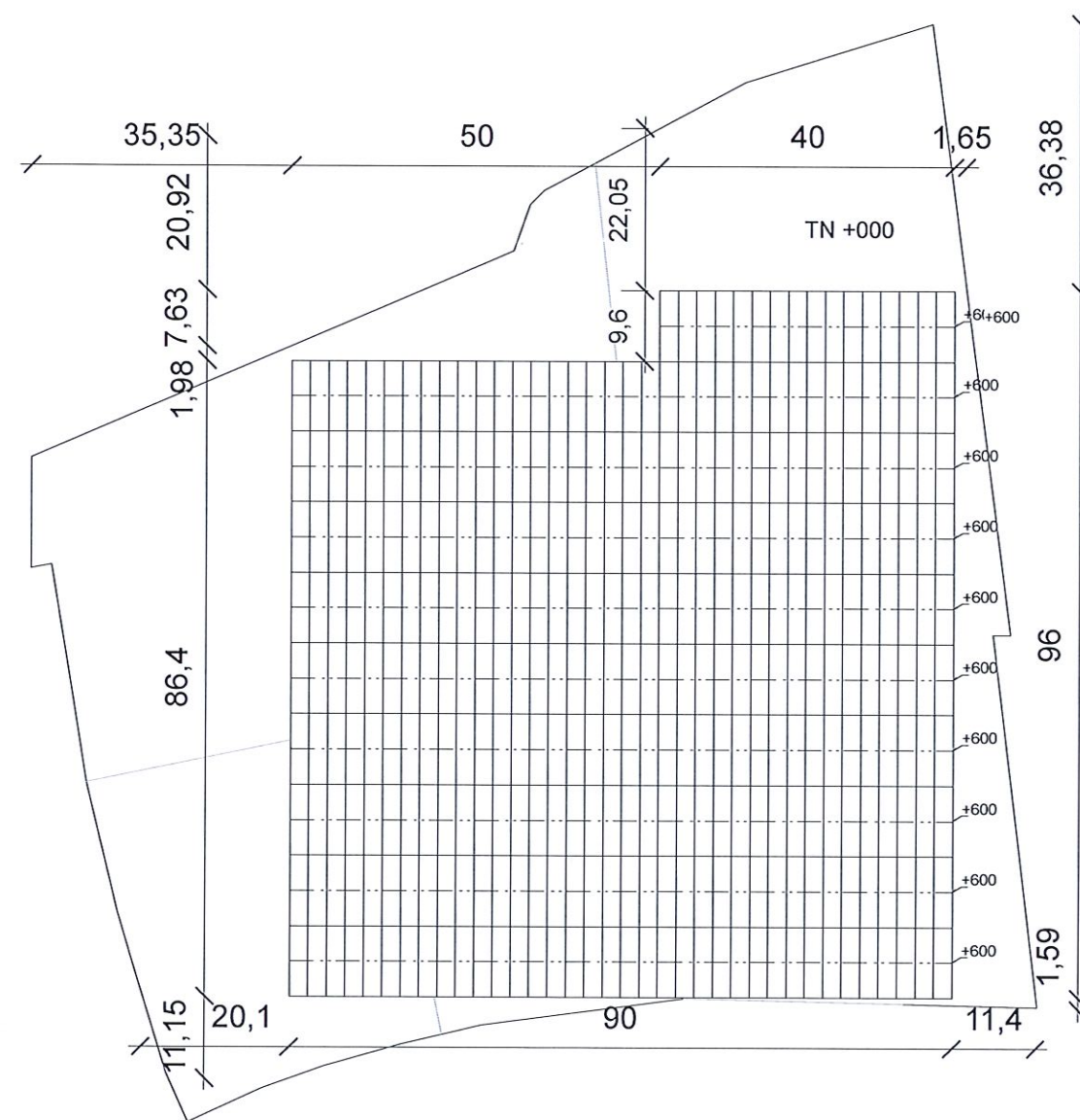
PHOTO RÉALISÉE LE 3 SEPTEMBRE 2020



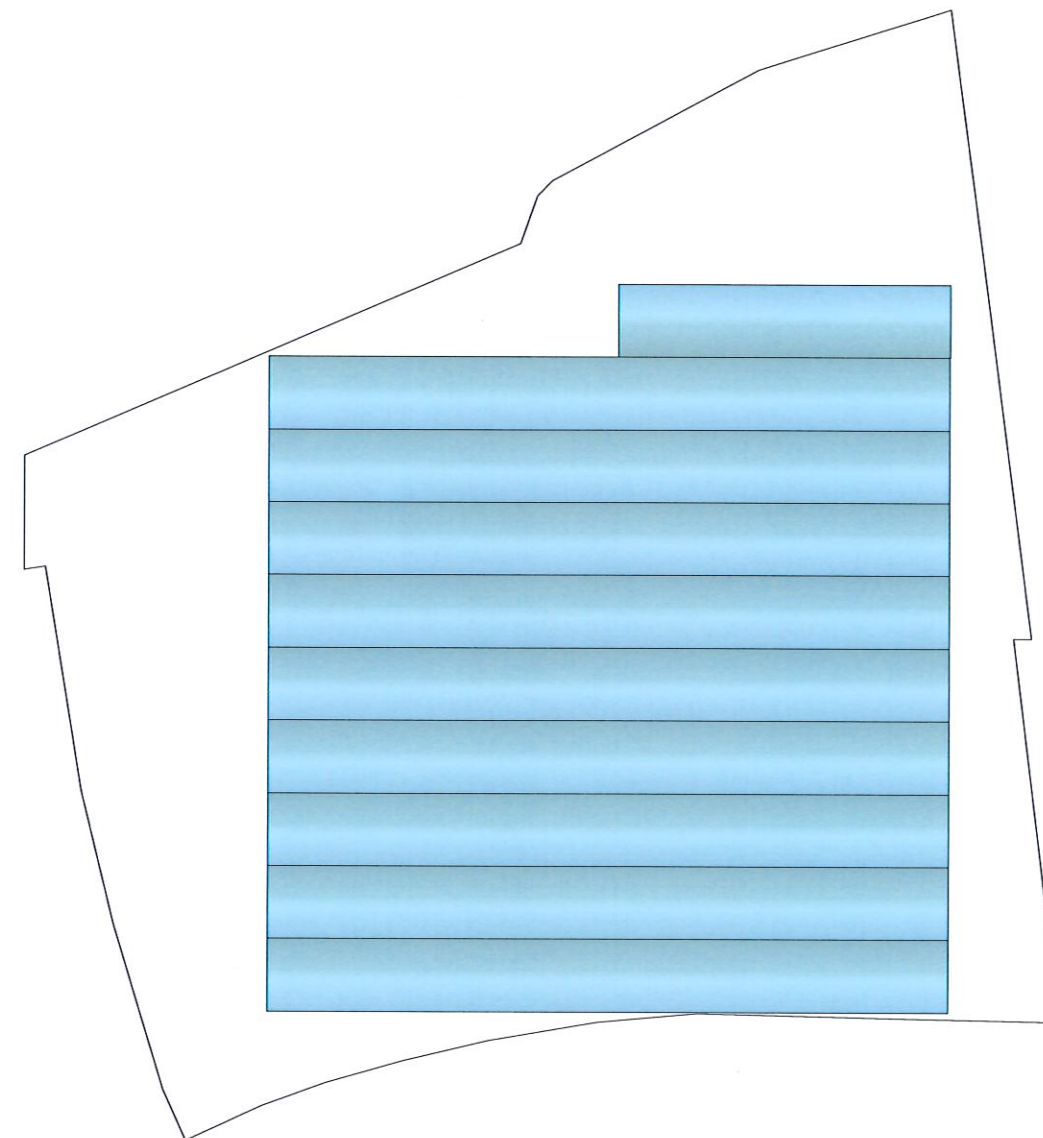
PHOTO RÉALISÉE LE 3 SEPTEMBRE 2020



EXTRAIT DU PLAN CADASTRAL



SURFACE SERRES 8160 m2



PLAN DE COUVERTURE ech 1/1000

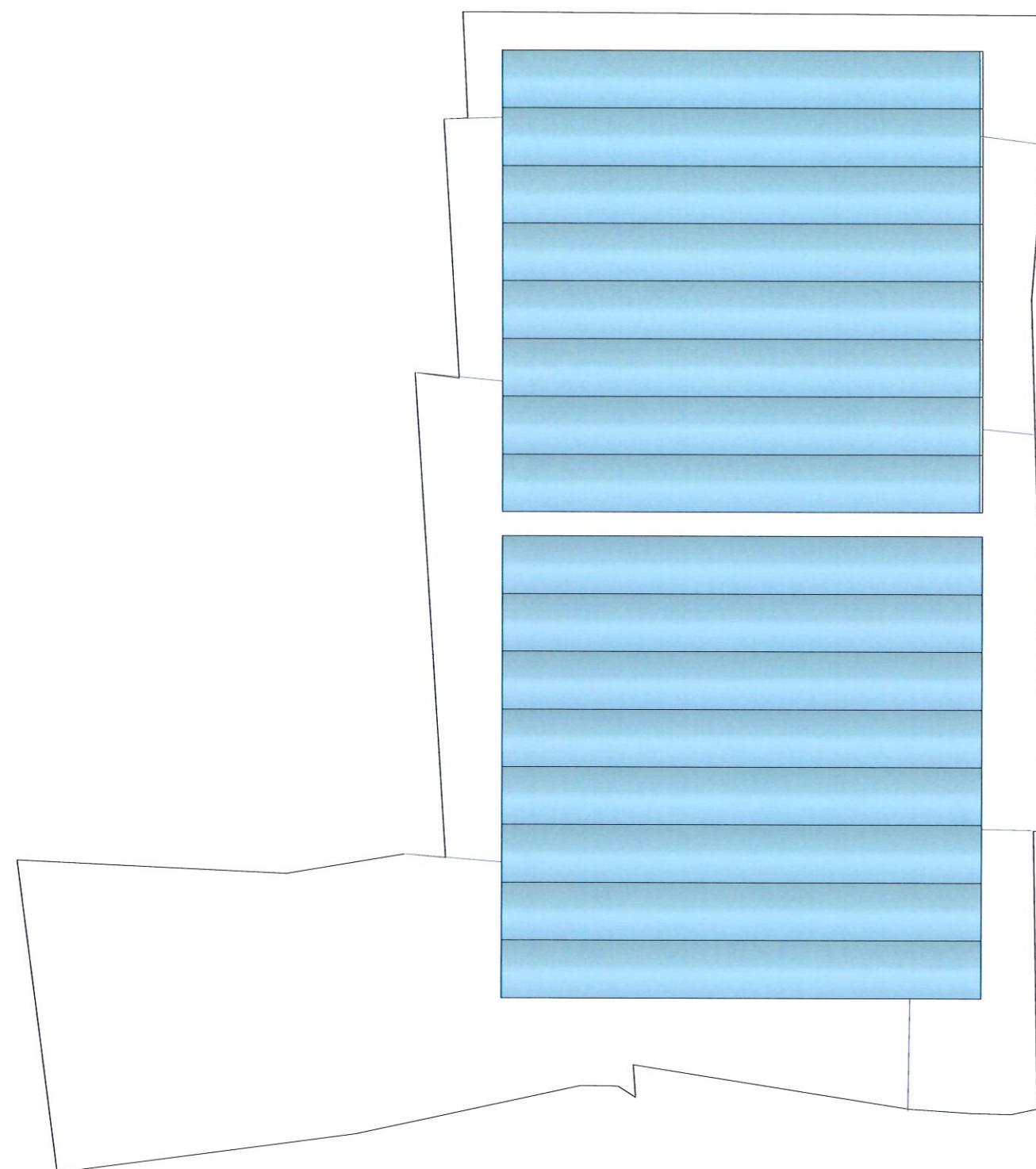
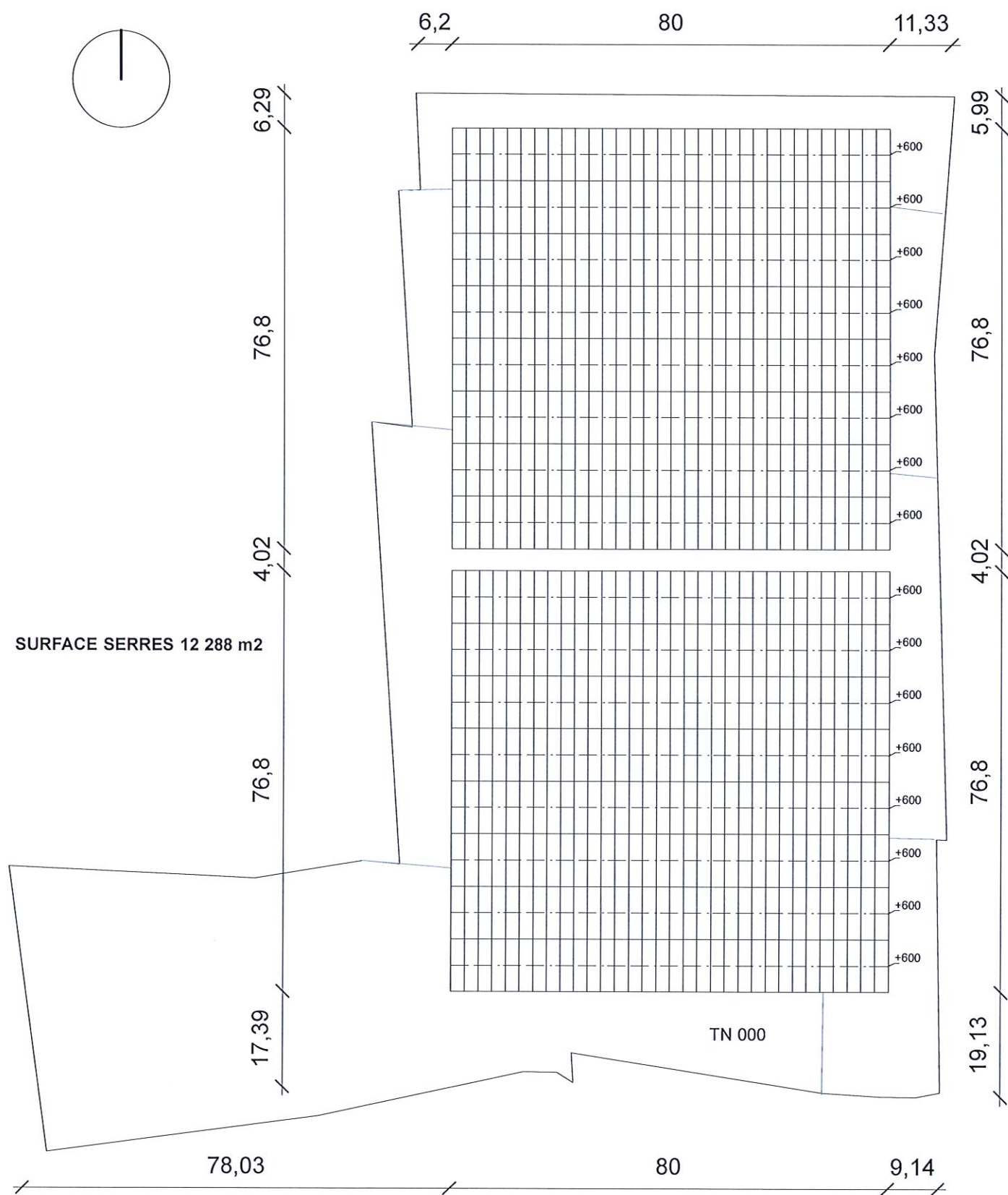




Technical drawing of a rectangular plot with a grid. The plot is labeled "TN +000" in the center. The grid is composed of 10 columns and 10 rows of squares. The dimensions are as follows:

- Top horizontal dimension: 14,23
- Right vertical dimension: 18,89
- Bottom horizontal dimension: 7,2 (left section), 60 (middle section), 15,17 (right section)
- Left vertical dimension: 19,73
- Internal horizontal dimension (from left edge to grid start): 96
- Internal vertical dimension (from top edge to grid start): 20,13
- Internal horizontal dimension (from grid end to right edge): 96
- Internal vertical dimension (from grid end to bottom edge): 11,52

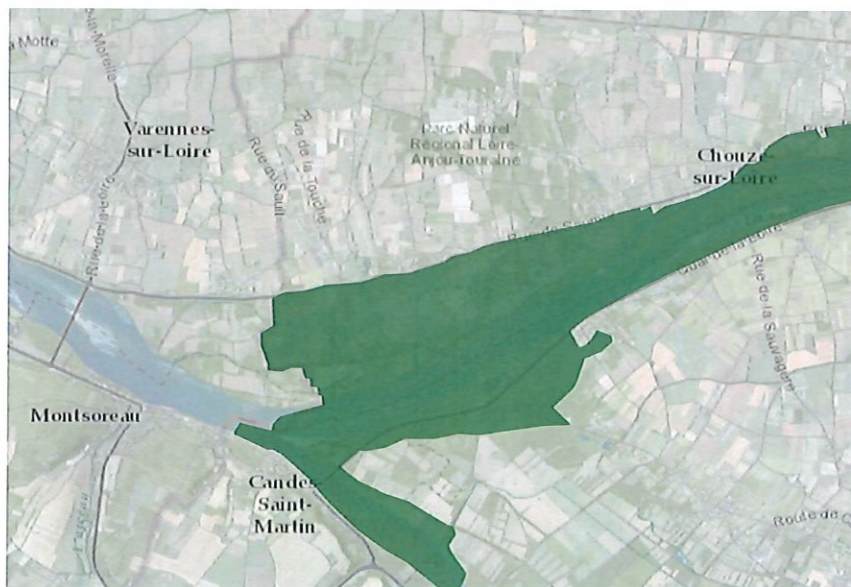
The grid is labeled with "96" in the center. The right edge of the grid is labeled with "600" at the top and "600" at the bottom, indicating a total height of 600 units.



PLAN DE COUVERTURE



IMPLANTATION DES TERRAINS



ANNEXE 6 PLAN DE SITUATION SITE NATURA 2000 LA LOIRE DE CANDES ST MARTIN À COSMES